

## F381 Filter Installation Instructions

Use "INLET" port for primary flow direction. Install filter closest to application or system component needing greatest protection against contamination. Reversing or bi-directional flow applications should have at least two filters installed to protect components against debris. For example, on the inlet and discharge sides of a pump or on the inlet and outlet sides of a flow meter.

Preferred mounting orientation of filter depends upon application or system being protected from debris. Max Precision Flow Meters typically have horizontal or upward vertical flow requirements. These orientations optimize air purging through the filter and provide additional benefits to Max Precision Flow Meters.

**NPT Fittings:** Use pipe sealant or pipe tape to install fittings. Leave first thread of pipe exposed. Ensure tape or sealant does not enter filter.

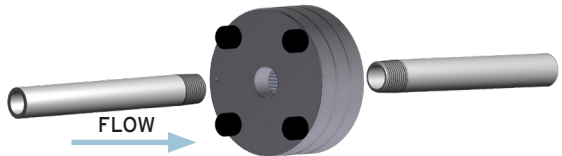
**SAE / BSPP Fittings:** Always use process fluid compatible lubricant on the o-ring to attach fittings to the filter.

For best performance:

**Clean Plumbing:** Before installing your filter, clean the inside of the pipe line with compressed air or steam (especially when using new pipe). Do not use water, steam, or compressed air through the filter!

**Bypass Valves:** Install valves to allow system start-up or filter replacement without completely shutting down the system and draining the lines.

Figure 1. Mounting and Flow Orientation



Max Machinery, Inc.  
maxmachinery.com  
P: 707.433.2662

**max**

## F381 Filter Installation Instructions



Do not run water or aqueous solutions through F381 filters.



Do not over pressurize the filter or apply excessive differential pressure across the filter. Damage may occur.



Do not exceed maximum flow rates. Damage may occur.



Do not allow materials to cure and solidify in filter.



Practice good maintenance. Replace your filter elements on a regular basis.



Read the entire manual before installing and operating the filter.



Purge all air bubbles from your system before operating.



Verify the fluid to be measured is compatible with the filter.



Install bypass plumbing around the flowmeter and filter.



Follow all local regulations and your company safety procedures when installing, operating, servicing, and maintaining your filters.