

## Model F381 Series Filter

### SPECIFICATIONS

Element	Stainless steel woven mesh
Size(s)	5, 10, and 30 micron
Maximum Operating Pressure	3000 psi (207 bar)
Flow Rate (at 3 cP)	up to 70 liters/min
Port Size(s)	3/8" NPT, #6 SAE, 3/8 BSPP*
Weight	1.34 kg

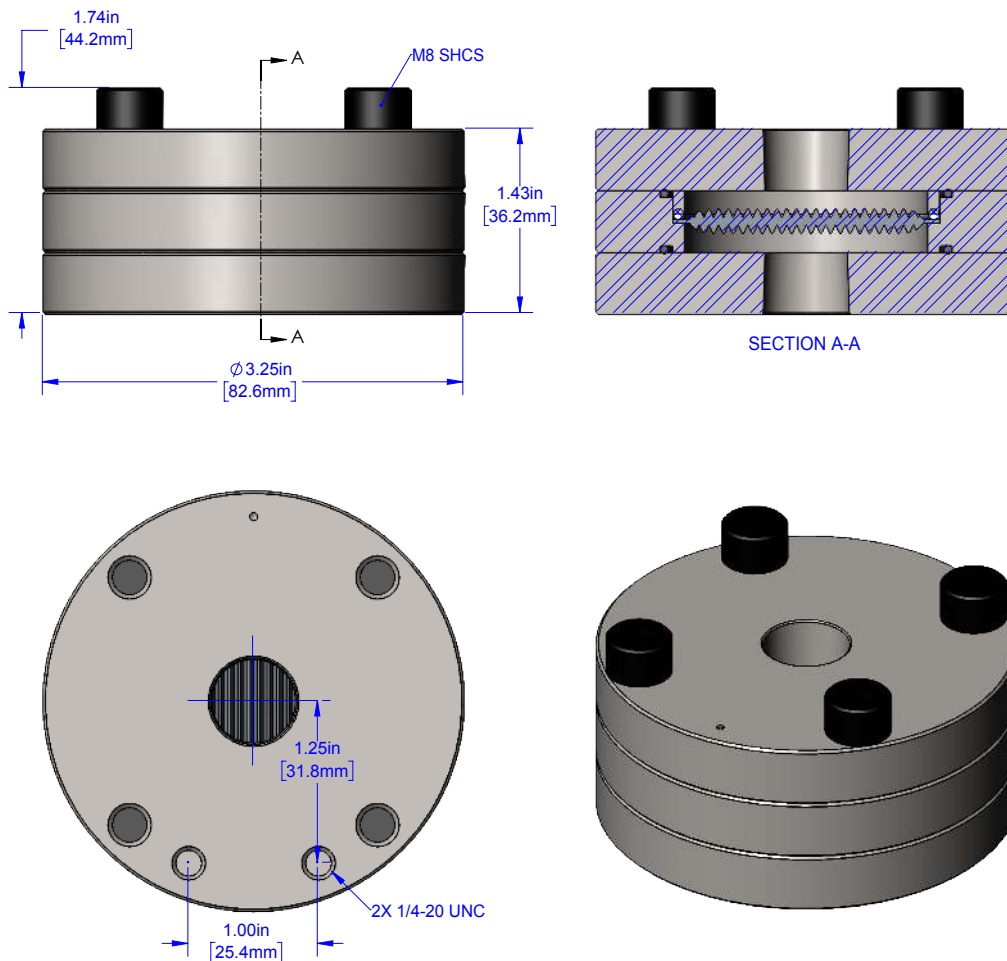
\* Consult Factory for Availability



### MATERIALS OF CONSTRUCTION

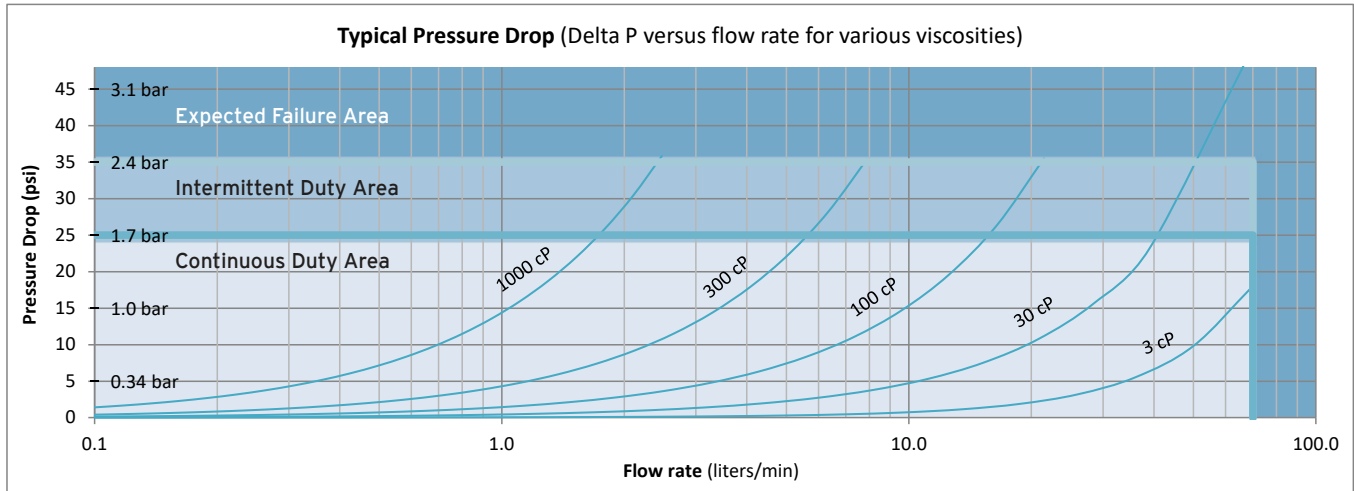
Body	Stainless steel, type 303
Element	Stainless steel, type 304
Seals	Standard: Viton® Optional: Teflon®, Neoprene, Perfluoroelastomer

### DIMENSIONS

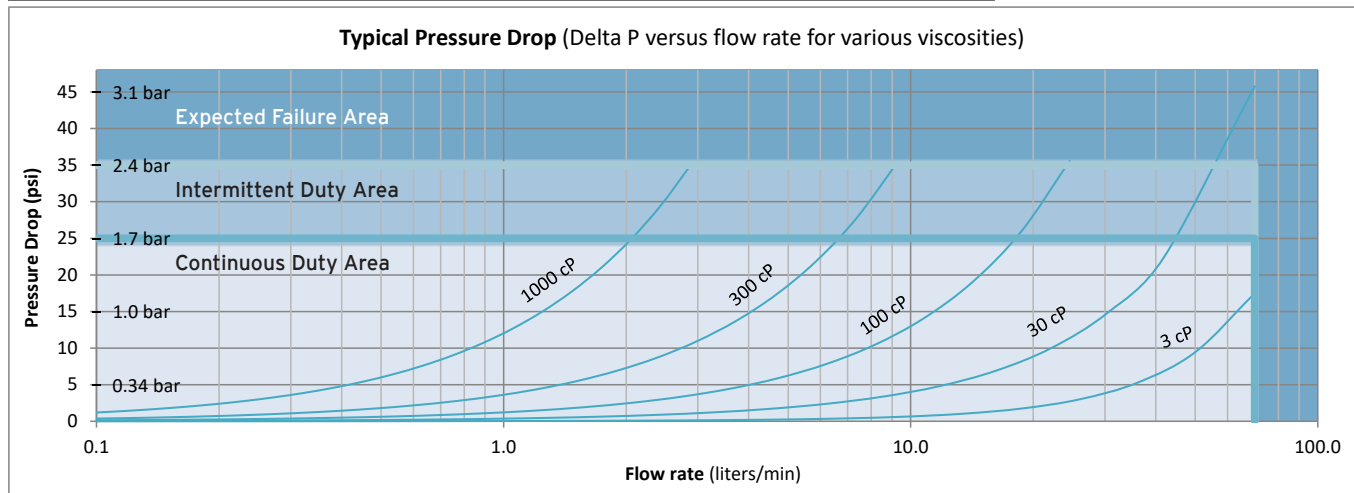


## Model F381 Series Filter

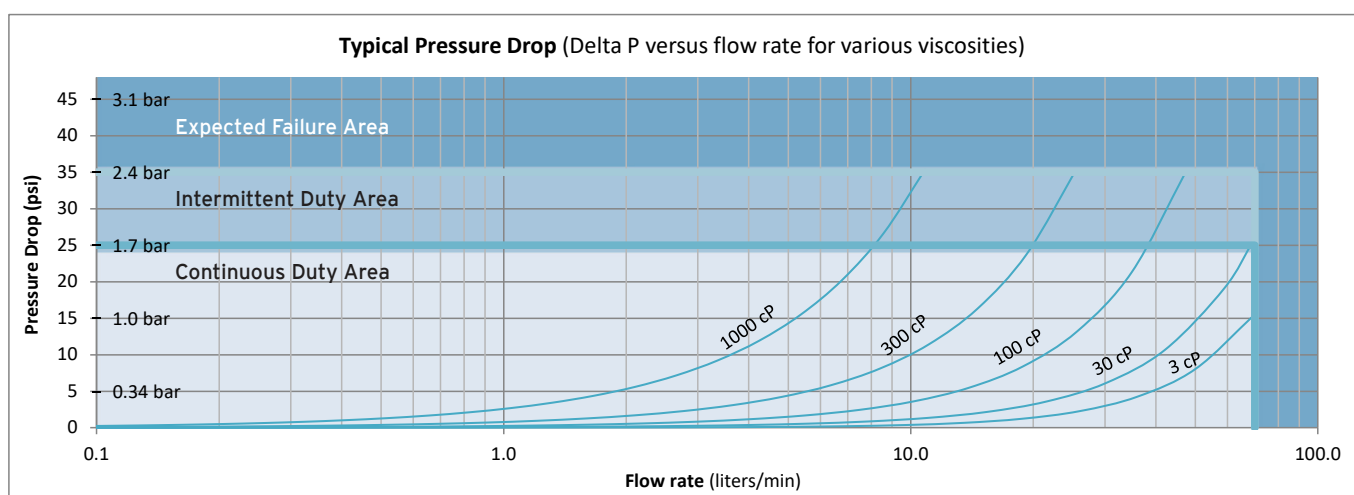
### 5 Micron Filter



### 10 Micron Filter



### 30 Micron Filter





Max Machinery, Inc.  
an ISO 9001:2015 certified company



## F-Series Filters 3000 psi (210 bar) rated

### Filter Selections

Model #  -  -  -

#### Fluid Connection

NPT	NPT
SAE	SAE
*BSPP	BSP

#### Filtration Level

5 Micron	05
10 Micron	10
30 Micron	30

#### Seal Selection

Viton® - FKM	VIT
Teflon® - PTFE	TEF
Perfluoroelastomer - FFKM	PER
Neoprene	NEO

\*Consult Factory for Availability

### Replacement Filter Element Selections

Model #  -  -

#### Filtration Level

5 Micron	103
10 Micron	102
30 Micron	104

#### Seal Selection

Viton® - FKM	705
Teflon® - PTFE	725
Perfluoroelastomer - FFKM	765
Neoprene	715

