

Model P001LA Piston Flow Meter (Analog) 0.005 to 200 cc/min

SPECIFICATIONS

Flow Range	0.005 to 200 cc/min
Accuracy (3 cP)	± 0.2% of reading over a 200:1 range
Maximum Operating Pressure	250 psi (17 bar)
Weight	0.4 kg
Recommended Filtration	5 micron
Port Sizes	1/4" or 6mm tube fitting
Fluids	Most non-aqueous, hydrocarbon based fluids

MATERIALS OF CONSTRUCTION

External	Hard anodized aluminum type 6061; Xylan coated bolts
Wetted	Hard anodized aluminum type 6061; Stainless steel, type 316, Case Hardened type 316, Specialty 400 Series; Nickel plated SmCo magnet
O-Rings	Standard: Viton® Optional: Perfluoroelastmer

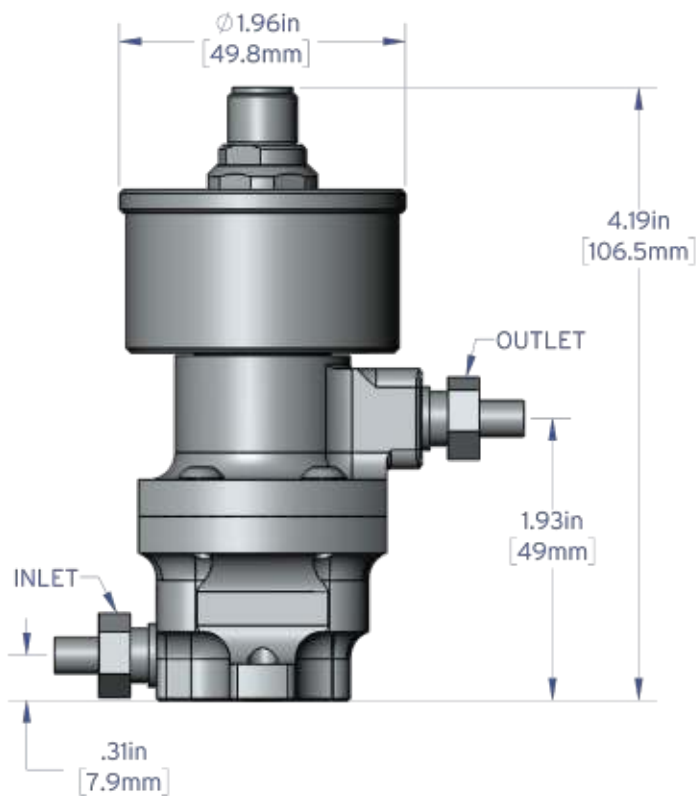


ANALOG TRANSMITTER

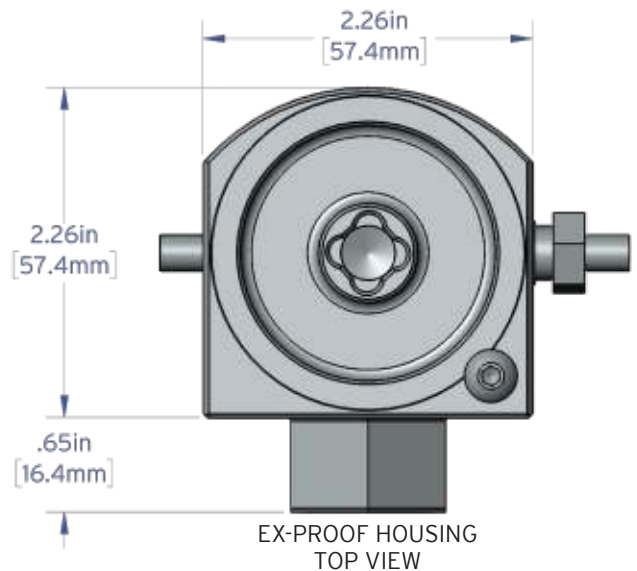
Output Signal	Any range of ± 10V or ± 20mA Linearized and damped with anti-dither protection
Power Supply Requirements	12Vdc @ 90 mA, 24Vdc @ 45 mA
Ambient Operational Range	-40°C to 80°C
Metered Liquid Temp Range (based on 20°C ambient)	-40°C to 90°C

Model P001LA Piston Flow Meter (Analog)

DIMENSIONS (Not to scale)



MODEL P001LA WITH TUBE PORT
AND INDUSTRIAL HOUSING

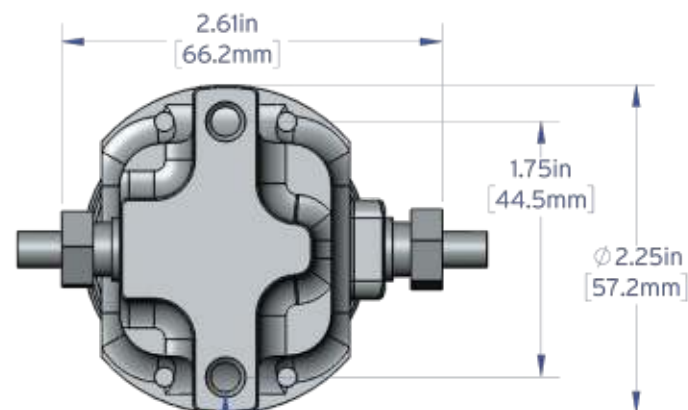


EX-PROOF HOUSING
TOP VIEW

10-32 UNF

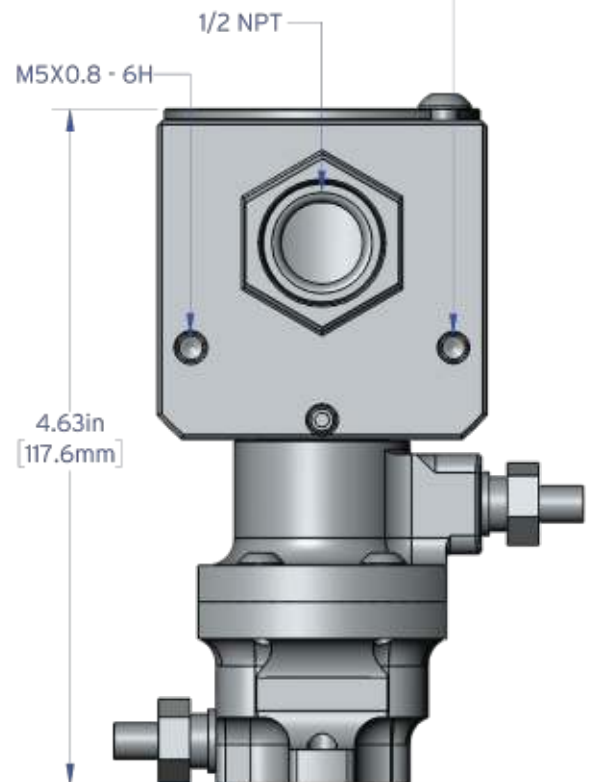
1/2 NPT

M5X0.8 - 6H



2X 1/4-20 UNC

BOTTOM VIEW

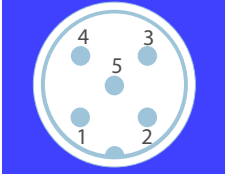


MODEL P001LA WITH TUBE PORT
AND EX-PROOF HOUSING

Model P001LA Piston Flow Meter (Analog)

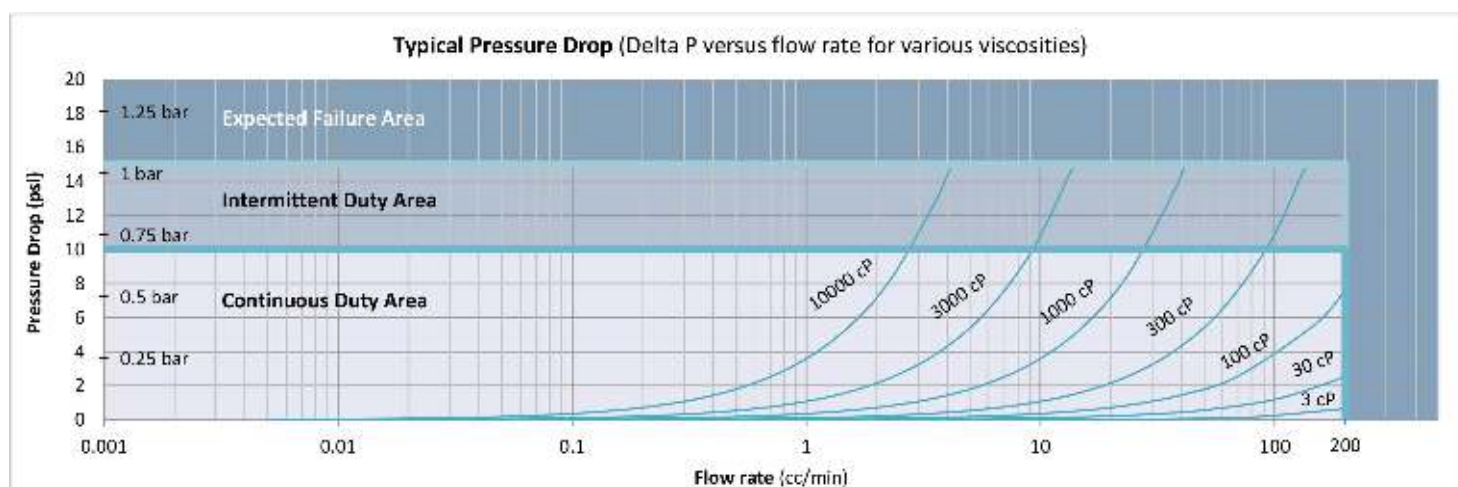
CONNECTIVITY

ELECTRICAL CONNECTION – ANALOG TRANSMITTERS

		Turck® Connector	
		PCA Label	Mating Cable Wire Color
Power *	V+	1	Brown
Common	Com	4	Black
Signal Output (+)	Sig	5	Grey
Signal Output (–)	Ret	2	White
Case Ground	Case	3	Blue

* Please specify 12Vdc or 24Vdc operation

PRESSURE DROP GRAPH





Max Machinery, Inc.
an ISO 9001:2015 certified company

Positive Displacement Flow Meters Piston Type, P-Series 250 psi (17 bar) rated

Flow Meter Selections				Transmitter Selections								
Model #	<input type="text"/>	LA	<input type="text"/>	/	<input type="text"/>	<input type="text"/>	<input type="text"/>	/	<input type="text"/>	-	<input type="text"/>	Non-Standard Options
												Bi-Directional Cal: BID
												1 Transmitter Type
												Output Type
Max Flow Range												A 4-20mA Output - Powered by 24 Vdc
0.2 Liters/Min P001												A 4-20mA Output - Powered by 12 Vdc
												C 0-10 Volt Output - Powered by 24 Vdc
												D 0-10 Volt Output - Powered by 12 Vdc
												N 5V Pulse/Freq. - Powered by 5-26 Vdc
												N 5V Quadrature - Powered by 5-26 Vdc
												S Current Sinking, Single Phase
												Temperature Rating
Pressure												1 90°C Industrial
250 psi (17 bar) LA												
												Electrical Connection
Fluid Connection												1 Industrial, Turck® Connector
1/4" and 6mm Tube 3												
												Signal Type
Seal Selection												P Pulse
Viton® - FKM 1												A Analog
Perfluoroelastomer - FFKM 5												Q Quadrature
Options												
None NA												

Product includes single directional calibration, bi-directional calibrations for Analog and Quadrature devices are optional.

