



Max Machinery, Inc.
an ISO 9001:2015 certified company

Model CGM1 Gear Flow Meter (Frequency)

1.0 cc/min to 2 liters/min

SPECIFICATIONS

Flow Range	1 cc/min to 2 liters/min
Accuracy (at 30 cP)	± 1.0% of reading over a 100:1 range
Accuracy (at 3 cP)	± 1.0% of reading over a 100:1 range (≤100 psi*)
Maximum Operating Pressure	250 psi (17 bar)
Weight	0.4 kg
Recommended Filtration	10 micron
Port Size(s)	1/8" NPT or 1/8" BSPP
Fluids	Most aqueous and hydrocarbon-based fluids
Typical Fluid pH Range	2 to 13



MATERIALS OF CONSTRUCTION

External	Unfilled PEEK: Stainless Steel, type 303, 316, 17-7; FKM
Wetted	Unfilled PEEK: Zirconia (ZrO2)
O-Rings	Standard: FEPM (Fluoroelastomer) Optional: FFKM (Perfluoroelastomer)

FREQUENCY TRANSMITTER

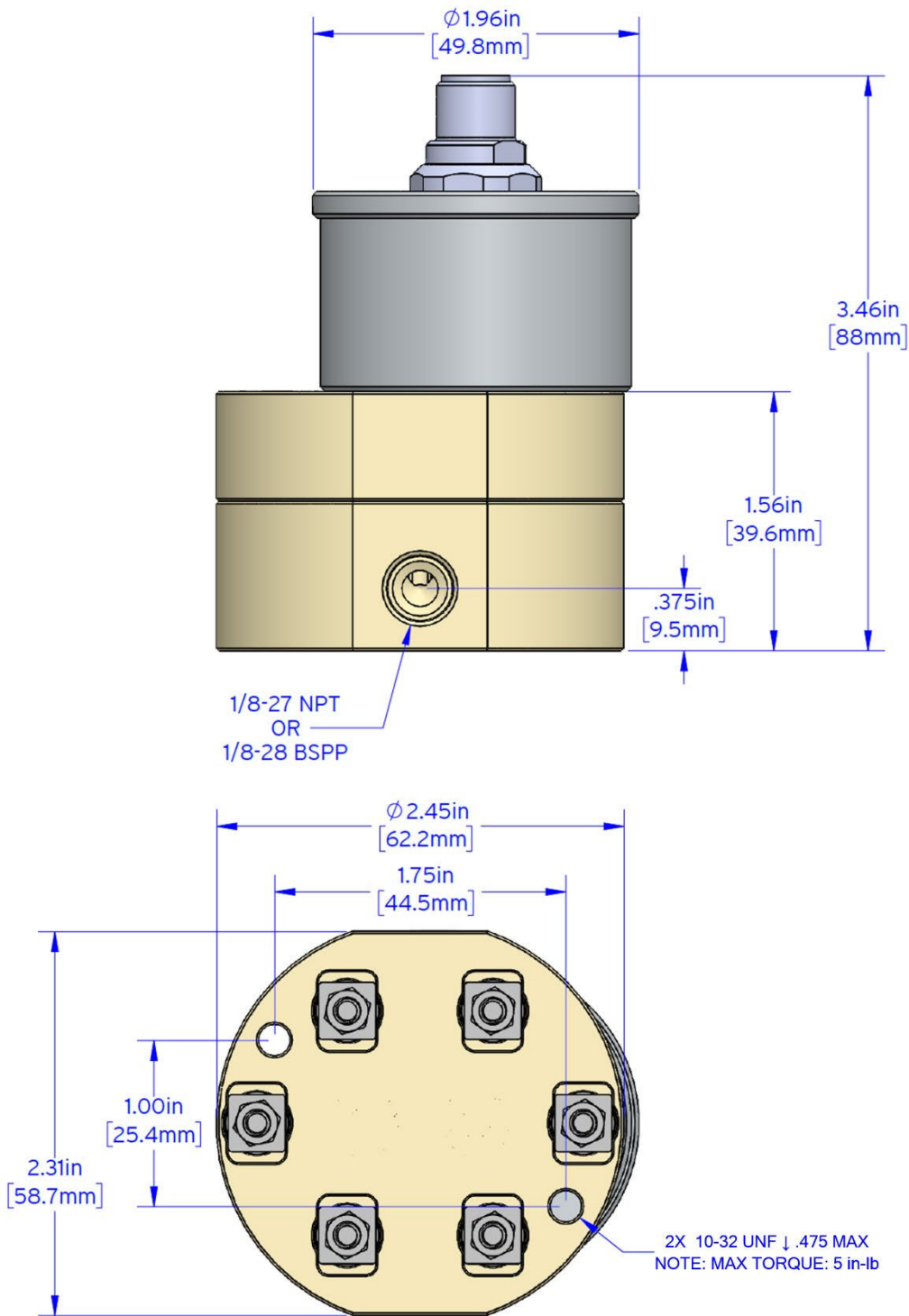
Output Signal	Standard: 5 Vdc, single phase Optional: Quadrature 5 Vdc, two phase Current sinking, 20 mA max., single phase
K-Factor	Single Phase: 500 pulses/cc Two Phase: 1,000 pulses/cc, 4x decoded (250 pulses/cc/phase, 1x decoded)
Power Supply Requirements	5 - 26 Vdc, at 30 mA
Ambient Operational Range	-15°C to 70°C
Metered Liquid Temp Range	-15°C to 70°C

Compliance	CE Certified - IP65 Rated
------------	---------------------------

*When operating above 100 psi, accuracy over the 100:1 range may increase to +/- 3% of reading

Model CGM1 Gear Flow Meter (Frequency)

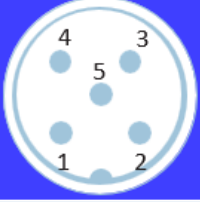
DIMENSIONS (Not to scale)



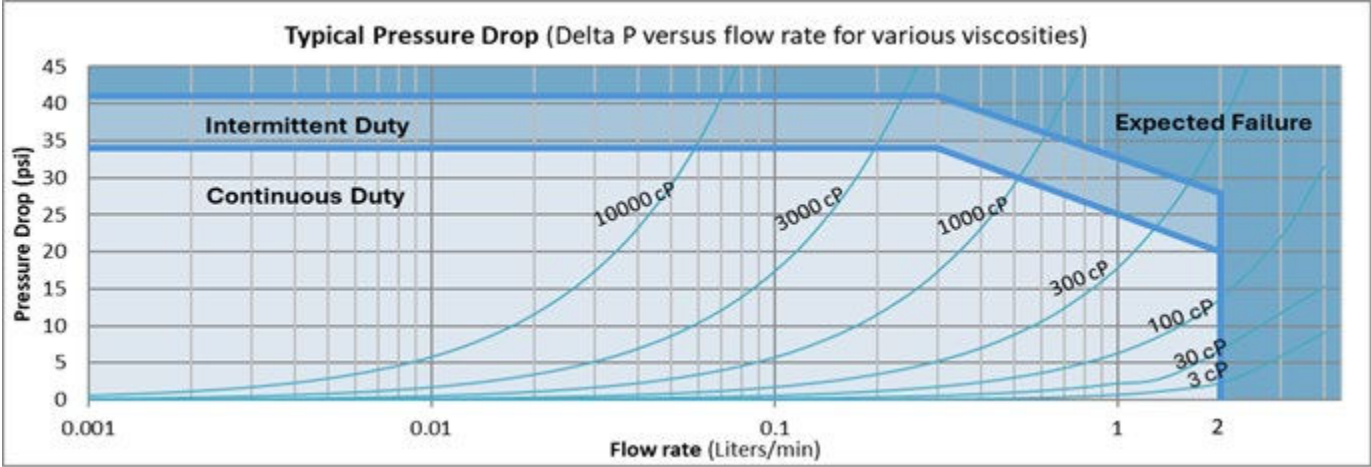
Model CGM1 Gear Flow Meter (Frequency)

CONNECTIVITY

Electrical connection - Frequency Output Transmitters

	Turck® Connector		
	PCA Label	Pin #	Mating Cable Wire Color
Power (+5 to 26 Vdc)	V+	1	Brown
Common	Com	4	Black
Pulse Output	Ph A	2	White
Output Phase B (Quad only)	Ph B	5	Grey
Case Ground	Case	3	Blue

PRESSURE DROP GRAPH



CGM1 Flow Meter

Flow Meter Selections Transmitter Selections
Model # LP / / 1 - Non-Standard Options
Bi-Directional Cal: BID

Max Flow Range
2.0 Liters/Min CGM1

Pressure
250 psi (17 bar) LP

Fluid Connection
NPT 1
BSPP 6

Seal Selection
AFLAS® - FEPM 9
Perfluoroelastomer - FFKM 5

Options
Calibration Viscosity 30 cP C1
Calibration Viscosity 3 cP C2
(Consult Factory) Calibration Viscosity 1 cP C3

CGM Viscosity Calibration Guide

Application Use Viscosity (cP)	Factory Calibration Viscosity (cP)
≥ 10	30
2 ≤ Use ≤ 10	3
2 or less	1

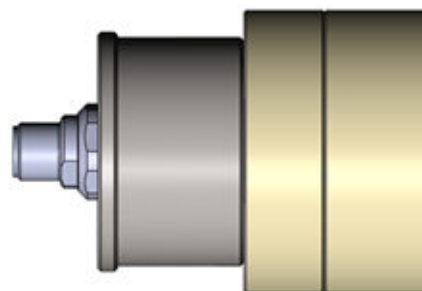
A
A
A
A
P
Q
P

Output Type
A 4-20mA Output - Powered by 24 Vdc
B 4-20mA Output - Powered by 12 Vdc
C 0-10 Volt Output - Powered by 24 Vdc
D 0-10 Volt Output - Powered by 12 Vdc
N 5V Pulse/Freq. - Powered by 5-26 Vdc
N 5V Quadrature - Powered by 5-26 Vdc
S Current Sinking, Single Phase

Temperature Rating
1 70°C Industrial

Electrical Connection
1 Industrial, Turck® Connector

Signal Type
P Pulse
A Analog
Q Quadrature



Model CGM1